

One Coventry Plan

Annual Performance Report 2021-22



Coventry had a year in the spotlight as the UK City of Culture, with more than a **million people** attending **700 events** in-person and online.



Employment remains **lower** than before the pandemic; efforts are being stepped up to **upskill** people to take up new job opportunities.



New developments in the city will create more opportunities for residents, from the new **Railway Station** building to **Two Friargate** and **City Centre South**.



Assaults, harassment and domestic abuse have all increased. In line with the new **domestic abuse act**, a strategy has been developed to support victims and their children.



The number of **people receiving long-term support** from adult social care is stable; and for children, **family valued** has been introduced to support families better.



Demand for homelessness services have increased. A new **Vulnerable Persons Forum** is being piloted to provide joined-up help.



An independent **Climate Change Board** has been established to address climate mitigation, development of a circular economy & biodiversity.



Recycling and composting rates have decreased. This is, in part, due to the suspension of collections earlier this year due to industrial action.

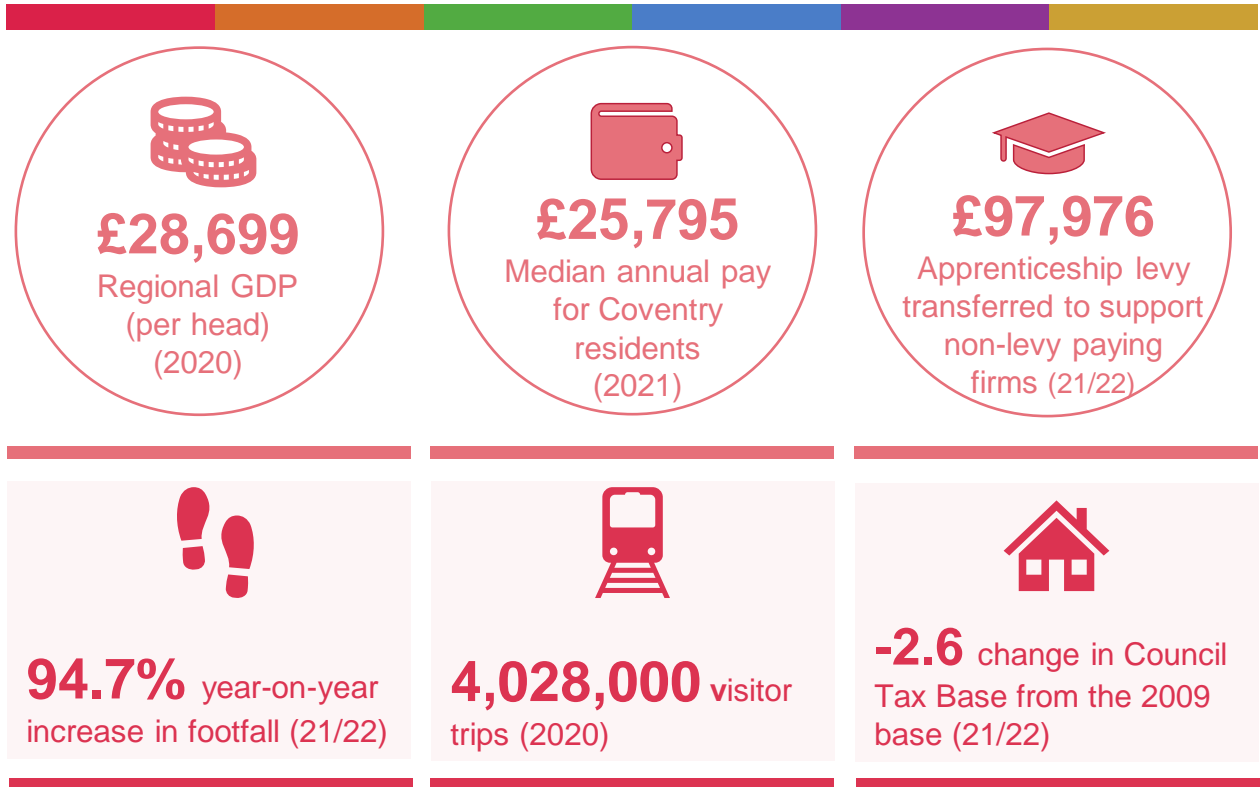


The Council has committed to plant a **tree for every citizen** over the next decade. This year, 20,000 trees have been planted.



One Coventry Plan

Increasing the economic prosperity of the city and region



93% of school leavers aged 16+ continuing to a “sustained education, apprenticeship or employment destination” (19/20)

10,120 active enterprises
333 enterprises per 10,000 residents (2021)

184 new jobs created
with the support of the Job Shop of which 152 were through the Kickstart Scheme (21/22)

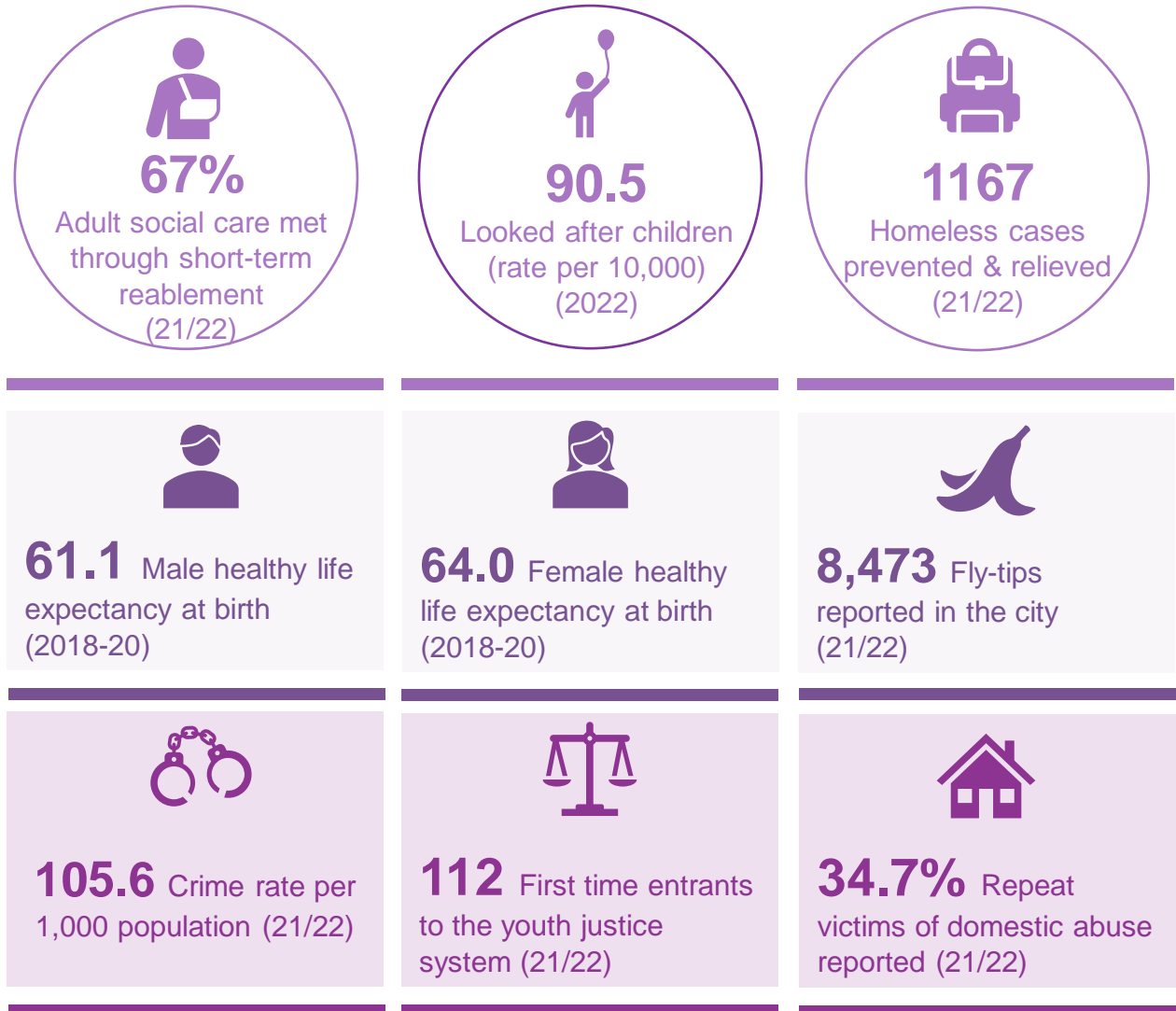
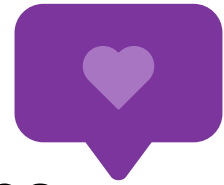
71.2%
Resident employment rate (Jan-Dec 21)

5.5%
Unemployment (model-based) (Jan-Dec 21)

4.4%
16-17-year-olds not in education, employment, or training (NEET) including not knowns (2021)

One Coventry Plan

Improving outcomes & tackling inequalities within our communities



3,531 people receiving long-term adult social care support
That is a rate of 1,183 per 100,000 (2022)

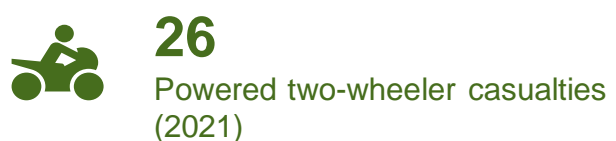
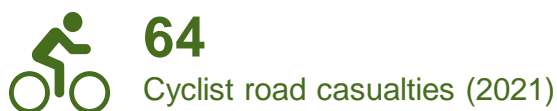
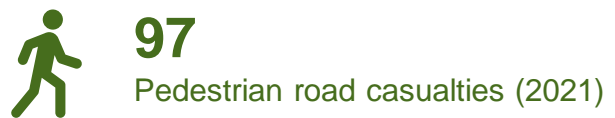
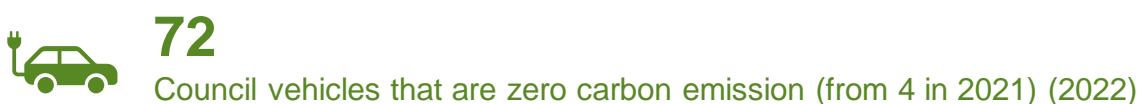
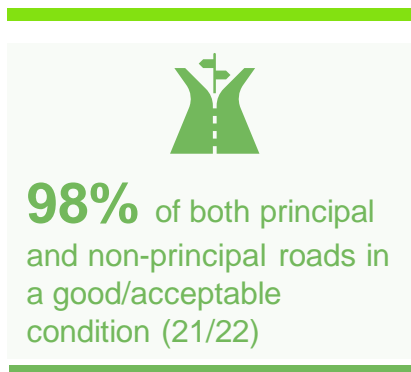
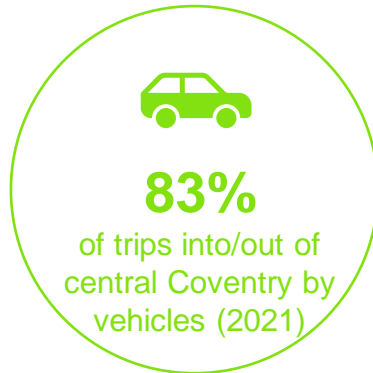
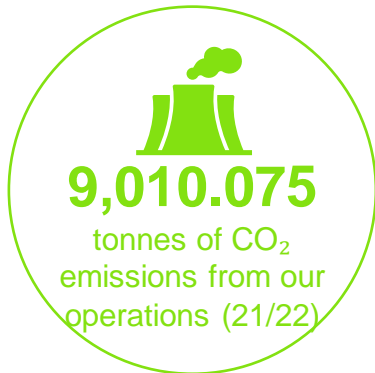
62% satisfied with care support
people who use adult social care services (21/22)

90% attending a good/outstanding school
Including primary, secondary and special schools (2022)



One Coventry Plan

Tackling the causes and consequences of climate change



One Coventry Plan

Continued financial sustainability of the Council

